



TECHNICAL DATA	STR 150 M	
Date:2020-01-27	COD:221150000	
	To  Company: BJC Tools Erp BV Reference: BJC Tools Phone: Email: .	
	Reference: BJC Tools Offer no.: 2020010114	



## OPERATING DATA REQUIRED

Flow	0 l/min	Viscosity	1,005 mm <sup>2</sup> /s
Head	0 m	Kin. viscosity	1,0033 mPa s
Fluid	Cold water	Vapor pressure	0,02337 bar
Temperature	20 °C		
Density	0,9983 kg/dm <sup>3</sup>		

## SUBMERSIBLE ELECTRIC WASTEWATER PUMPS WITH CRUSHING SYSTEM

The submersible draining electric pumps with crushing system of the series STR have been designed to crush possible suspended solids parts or fibres and draining dirty liquids, non-explosive or chemically aggressive for the pump's materials.

Temperatures not higher 35 °C (CEI EN 60335-2-41).

		SEA LAND S.r.l. (PD) ITALY www.sea-land.it		 MADE IN ITALY	
Type					
H (rif.5)		m		Q (rif.5) l/1'	
Hmin m		Hmax (rif.6) m		P <sub>1</sub> (rif.4) W	
○ (rif.2) HP		(rif.2) HP		(rif.1) ○ A	
~ (rif.1) V		Hz		η %	
(rif.3) μF V		IP (rif.9)		Rpm	
S/N		Ins.Cl (rif.8)		▽ m	
T. MAX FLUID. °C		(rif.7) kg			
Servizio continuo				Continuos duty	

## GENERAL DESCRIPTION

Voltage = V...(ref. 1), Power = HP or KW... (ref. 2), Input power = [W]...(ref. 4), Capacitor = μF...(ref. 3), Input current = A... (ref. 1), Rate of flow = l/1'...(ref. 5), Head = m...(ref. 5), Weight and dimensions = kg... (ref.7), Insulation Class = ...(ref. 8), Protected to = IP...(ref. 9)

## From

Company: BJC Tools Erp BV  
 Reference: Niels van Gerwe

Phone: 0413- 21 1156  
 Email: niels@bjctools.nl

Sea-land reserves the right to make changes without prior notice  
 Pagina 1 / 3



## TECHNICAL FEATURES

- Motor body and cover with handle: cast iron G20 with anti-corrosive coating
- Pump body: cast iron G20 with anti-corrosive coating
- Impeller: cast iron G20 with anti-corrosive coating
- Crushing system : in precision-cast temperate stainless steel AISI 440 C
- Pump shaft: stainless steel AISI 304
- Pump's side seal: mechanical carbon-ceramics
- Motor's side seal: lip ring in NBR
- Feeding cable: 10 m H07RN-F

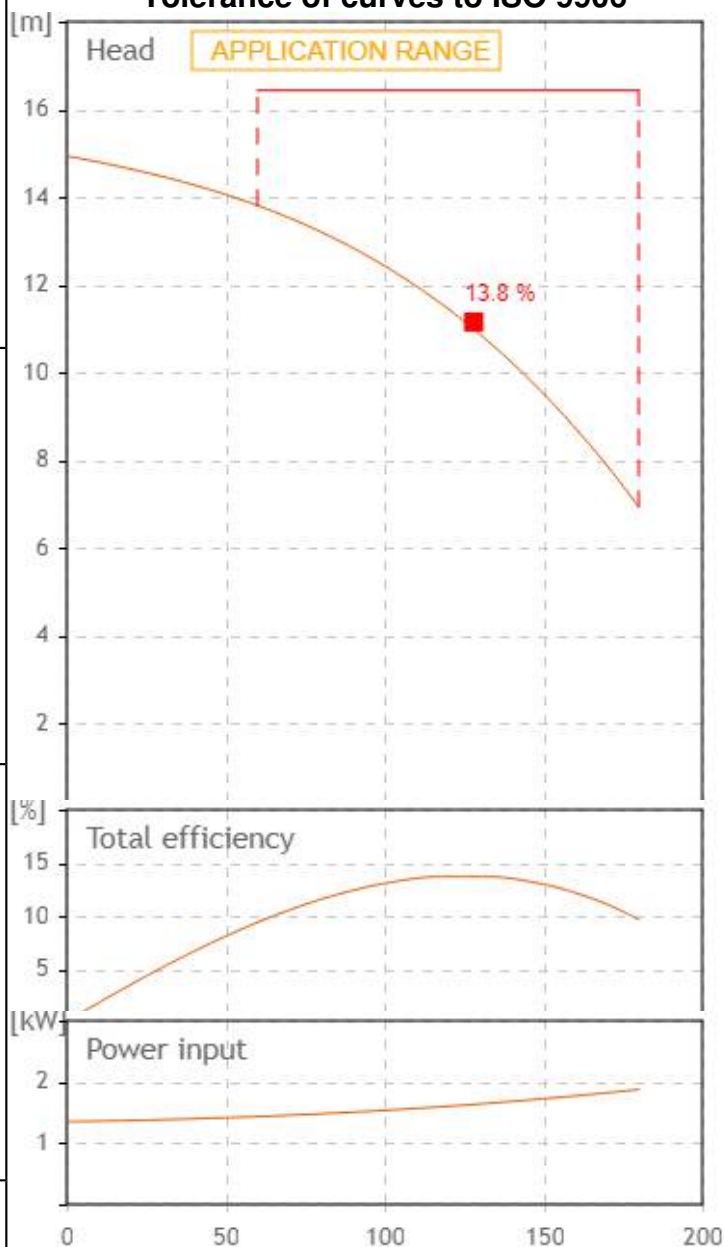
## MOTOR





- Two poles induction rewindable motor with protection IP 68, class F insulation.
- Single-phase feeding with capacitor permanently connected with Compulsory protection against overheating with safety control panel type CDA-M.
- Three-phase feeding 400 V with Compulsory protection against overheating with safety control panel type CDA-T.
- Continuous duty if completely submerged

## ON REQUEST:

- Single-phase automatic version with float switch (AUT).
- Brass hose connector with curve & nipples.

## Tolerance of curves to ISO 9906



		SEA LAND S.r.l. (PD) ITALY www.sea-land.it				MADE IN ITALY	
Type STR 150 M							
H 6 - 13.8		m	Q 180 - 60		l/1'		
Hmin 6.9		m	Hmax 14.9		m	p <sub>1</sub> 1900 W	
 1,5 HP		1,1 kW		8.5		 A	
~ 230 V		50 Hz		η %			
36 μF 450 V		IP 44		2900 Rpm			
S/N			Ins.Cl F		▽ m		
T. MAX FLUID.		35 °C		32.2 kg			
Servizio continuo				Continuos duty			



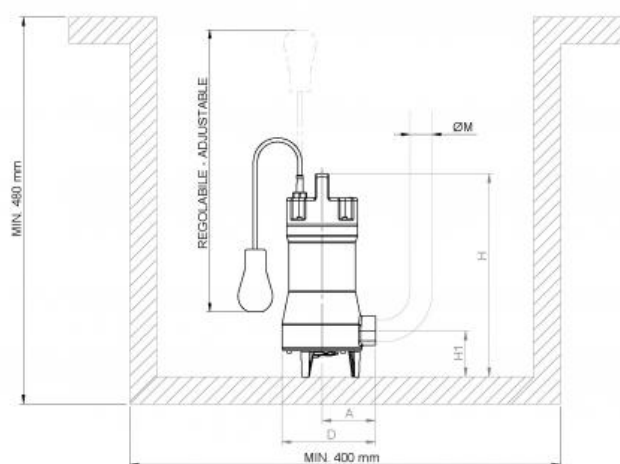
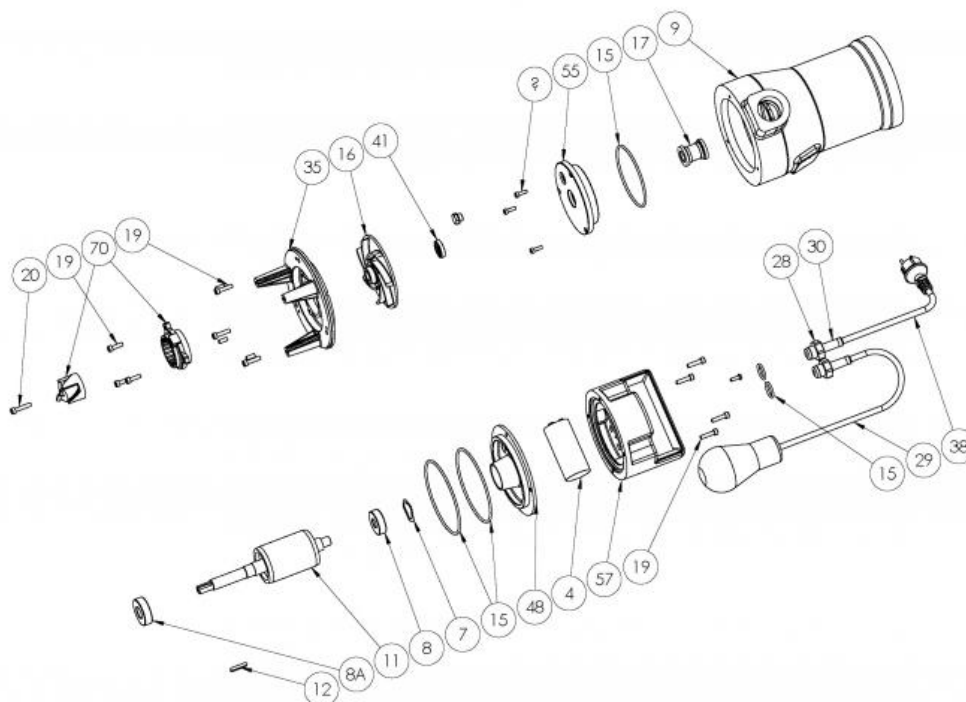
[l/min]

## From

Company: BJC Tools Erp BV  
Reference: Niels van Gerwe

Phone: 0413- 21 1156  
Email: niels@bjctools.nl

Sea-land reserves the right to make  
changes without prior notice  
Pagina 2 / 3



TIPO	DIMENSIONI [mm]					IMBALLO [mm]			PESO
TYPE	DIMENSIONS [mm]					PACKING [mm]			WEIGHT
	A	H1	H	D	DNM	Ai	Li	Pi	[kg]
STR 150 M	115	87	440	205	1" 1/2	250	215	460	32.2

**From**

Company: BJC Tools Erp BV  
Reference: Niels van Gerwe

Phone: 0413- 21 1156  
Email: niels@bjctools.nl

Sea-land reserves the right to make  
changes without prior notice  
Pagina 3 / 3